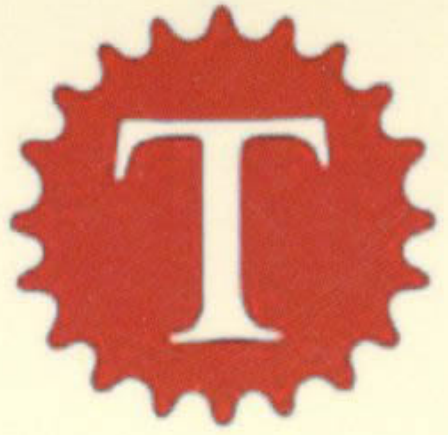




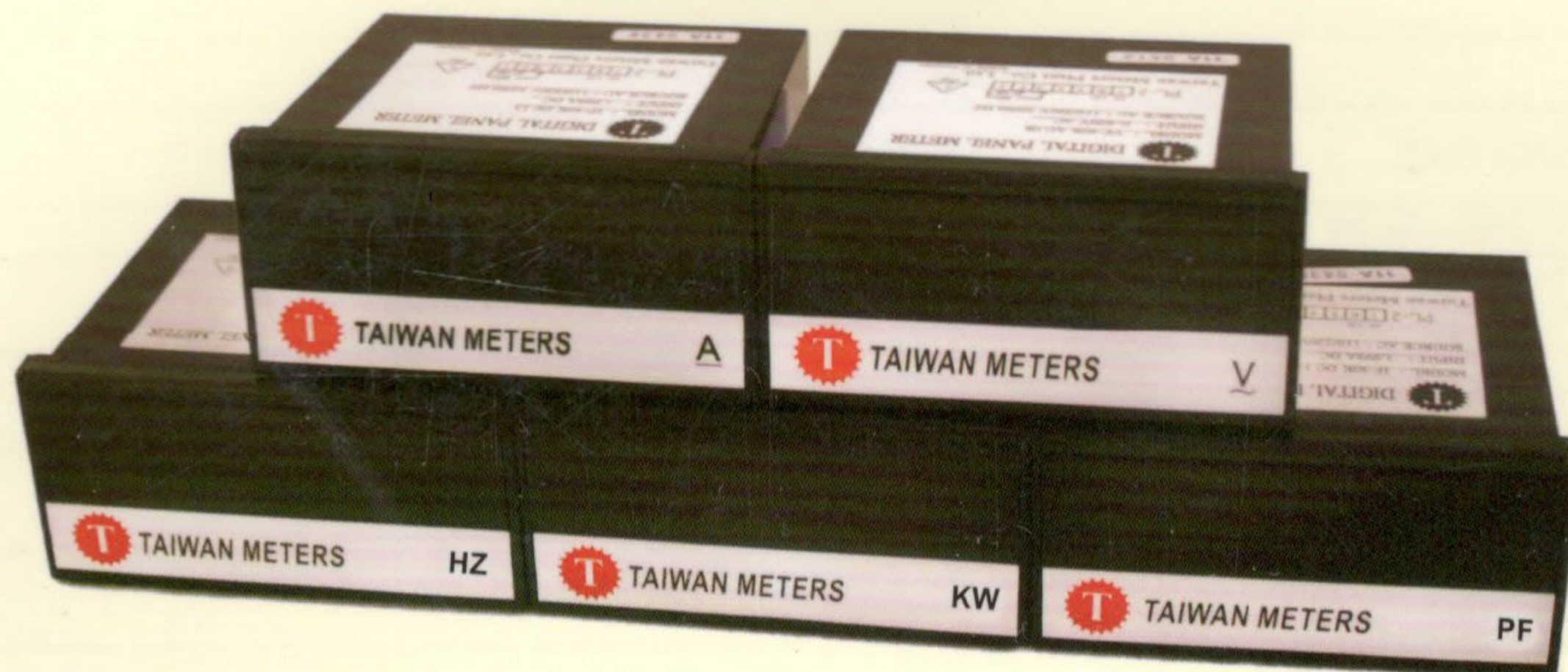
Digital Meter



Digital Panel Meters (DIN:96x48mm)-from Taiwan



V **A** **HZ** **KW** **Var** **PF**

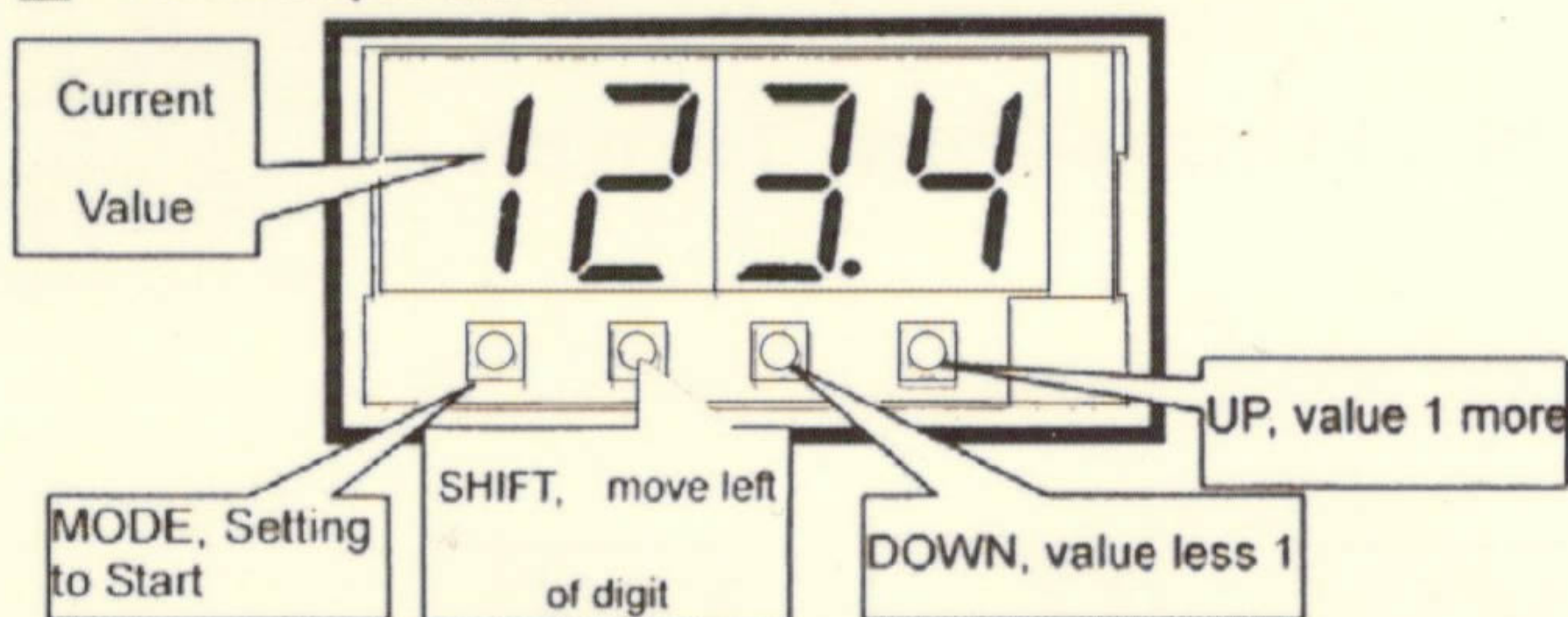


Model	VF/IF-40 (4 digit)	VF/IF-40K (4 digit)	VF/IF-50P (5 digit)
Power Supply	AC 110V.220V, 60/50HZ+10%		
Power Consumption	6VA MAX.		
Display Range	0.8" LED -999 1999	0.8" LED -1999 9999	0.8" LED -9999 9999
Input Resistance	Base on the input signal		
Overload Indicate	"-1" or "1"	"-or" or "or" "-oL" or "oL"	"00000"
Accuracy Class	+0.3 FS	+0.3 FS	+0.3 FS
External Dimension	96mm x 48mm x 88mm		
Ambient Temperature	-10 to 55oC with no icing		
Store Temperature	-25 to 65oC with no icing		
Relative Humidity	35% to 85% RH		
Sample Time	About 3 cycles/sec.		
Overload load	V: 1.2x rated continuous, 1.5x rated for 10sec. A: 10x rated for 10 sections		
Standard	EN55011, EN61326, EN61010		



MODEL IF-40K, VF-40K

Panel Explanation



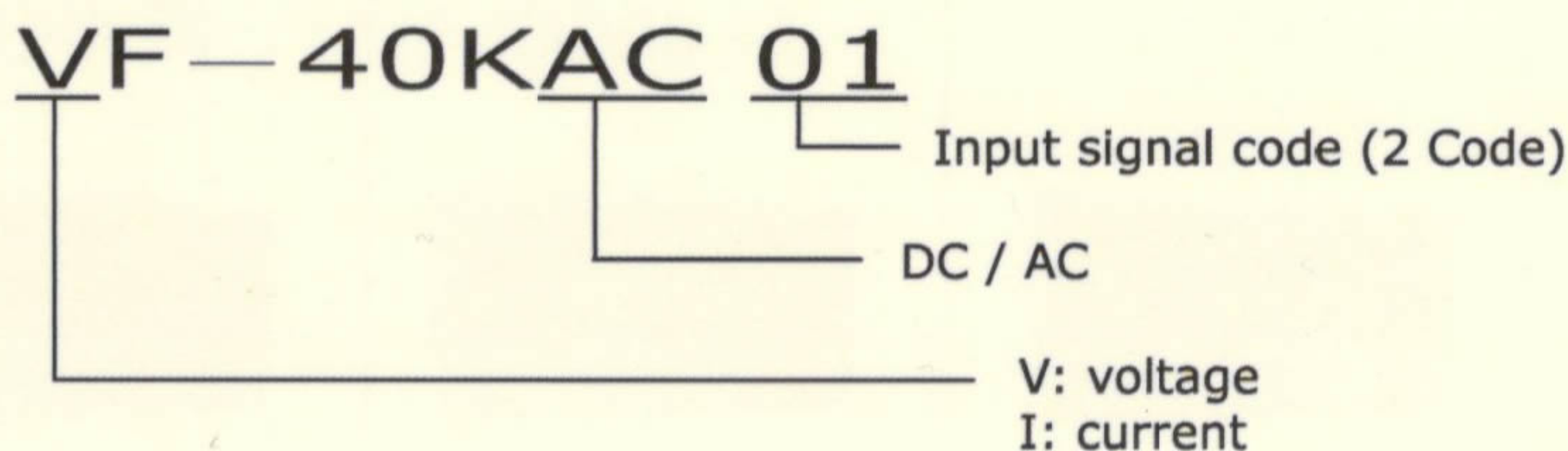
Function

- 1." Microprocess control voltage/current indicator, which can be used to measure the input signals of AC/DC voltage, current or other analog sensor, like Potentiometer, Pressure Sensor and Load Cell etc.
- 2." The users can set the input value, display value, Zero adjustment and the position of decimal point by themselves.
- 3." 0.8" height LED red display for easy to read.

Specification

Power Supply	AC 110V /220V · 60/50Hz ±10%
Power Consumption	6VA MAX..
Display Range	-1999~9999
Overload Indicate	"-or" or "or" means that the input signal over the range; "-oL" or "oL" means it over the display range
Input Resistance	Base on the input signal
Ambient Temperature	-10 to 55°C with no icing
Store Temperature	-25 to 65°C with no icing
Relative Humidity	35% to 85% RH

Item No. Guide



Input Signal Code

01	99.99mV	06	60V	11	19.99mA	16	±99.99mV	21	±60.00V
02	199.9mV	07	199.9V	12	199.9mA	17	±199.9mV	22	±199.9V
03	1.999V	08	600V	13	1.999A	18	±1.999V	23	±600.0V
04	9.999V	09	Potentiometer	14	5A	19	±9.999V	24	±999.9V
05	19.99V					20	±19.99V	xxx	(3 code)custom

Parameter Setting (press "mode" key and hold it around 5 secs to enter into the parameter setting mode.)

CUT

The rest value cut (CUT): if the current value is less this value, the meter will force to Zero. Press SHIFT key to start and the display range is 0~99.

AVG

Sampling average (AVG): To set the average times of current value, if the times is going high then more stability, but the response is going slow. Press SHIFT key to start this function. Range:1~99.

Pnt

Decimal Point (Pnt): Setting the position of decimal point of current value. Press SHIFT key to start setting and press this key again to change the position.

in-1

Input 1: Setting or Reading the current value of external signal, this setting value has relation with ds-1 setting. Press SHIFT key to start setting. (Hold SHIFT then can read the external signal)

ds-1

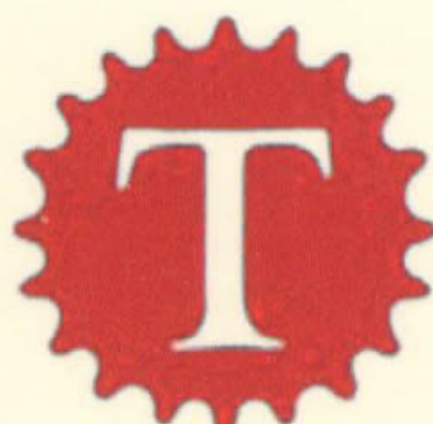
Display 1(ds-1): The setting value is correspond to the value of input 1 (in-1). Press SHIFT key to start setting.

in-2

Input 2: Setting or Reading the current value of external signal, this setting value has relation with ds-2 setting. Press SHIFT key to start setting. (Hold SHIFT then can read the external signal)

ds-2

Display 2(ds-2): The setting value is correspond to the value of input 2 (in-2). Press SHIFT key to start setting.



MANUFACTURERS TAIWAN METERS PLANT CO., LTD.

3F., No.66-11, Sec. 2, Nankan Rd., Lujhu Township,
Taoyuan County 338, Nankan Industrial Park, Taiwan.

TEL : (03)3117995(Rep.)

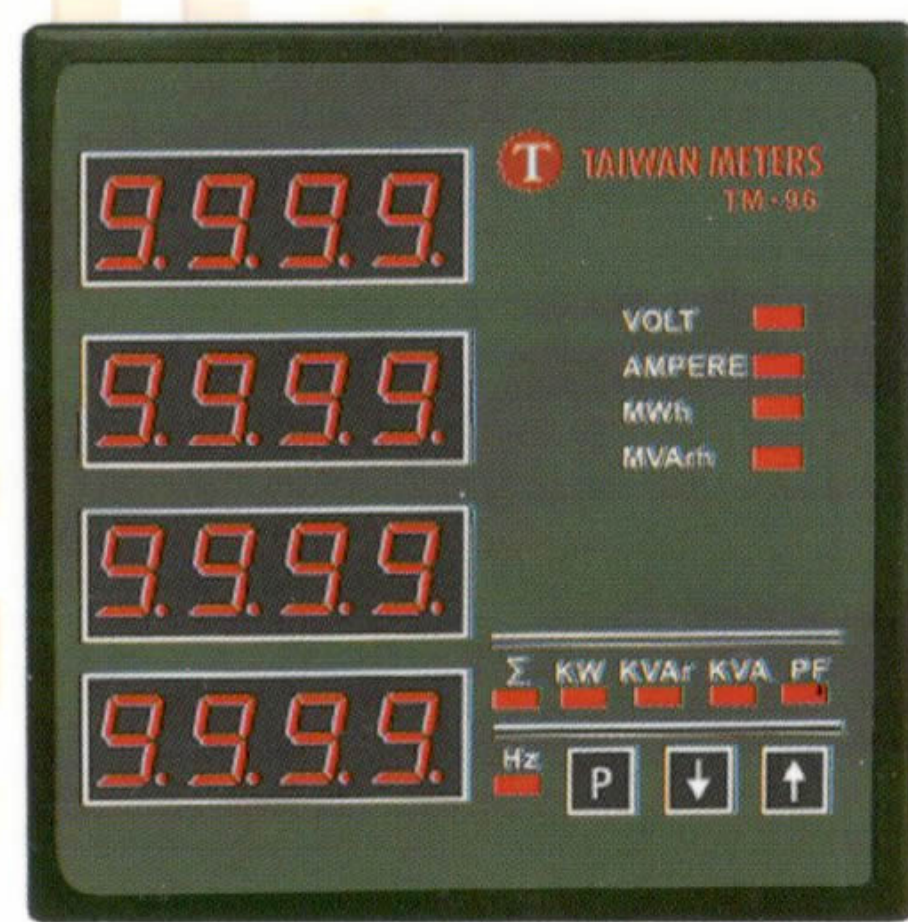
FAX : (03)3114894

E-mail : taiwanmeters@gmail.com

Website : <http://www.risesun.com.tw/>



TM-96 Digital Power Meter



TM-96 Power Meter is designed for DIN 96x96mm standard compact size easily installed. It provides wide range of measurement, including Current, Voltage, Frequency, Power Factor, KW Wat, KVA, KVA_r, MWh & MVA_rh, etc. Moreover, TM-96 includes built-in RS485 Modbus RTU Model easily communication using

Function overview

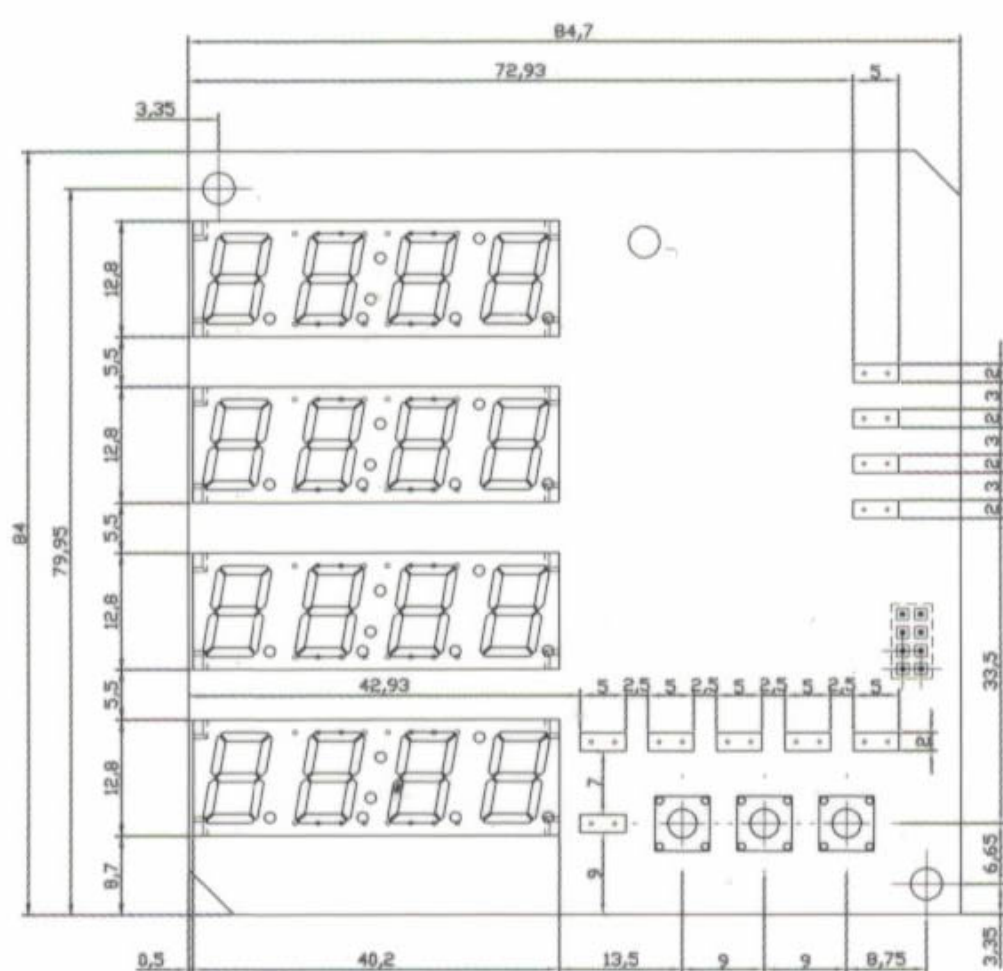
- Comply IEC62053-22, Class 0.5 standard.
- 0.40" Quadruple digit display of LED in 4-stage, easy to operate.
- Digital Power Meter application for Control Panel, Distribution Systems, Generator Sets

Parameters

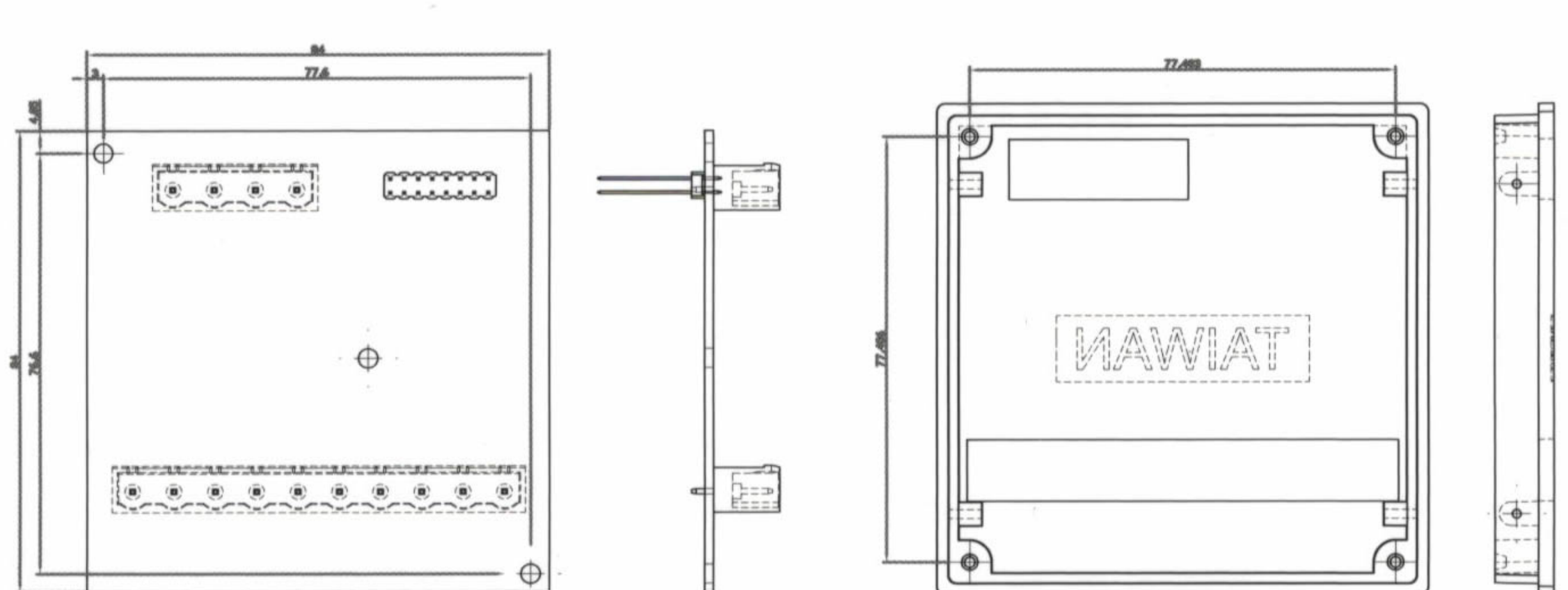
- Volt L-L for each phase.
- Volt L-N for each phase 10,000V.
- Amps for each phase 10,000A.
- Active Power, Reactive power, Apparent power.
- Active energy total resolution 0.1MWh max 9999MWh.
- Reactive Energy total resolution 0.1MVA_rh max 9999MVA_rh.
- Power Factor PF (cos ϕ) up to ± 0.1

Mounting

Front View(mm)



Back View(mm)



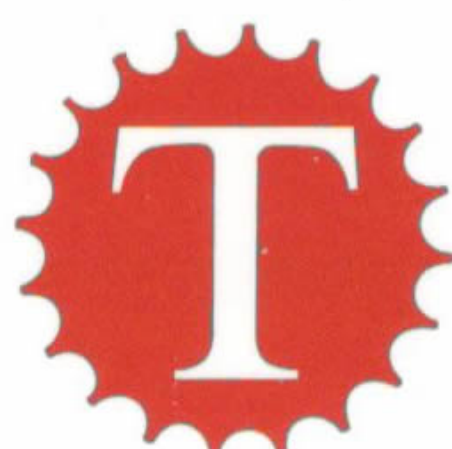
After mounting the instrument, please screw four support latches in position.

Specification

System	4-1/2 Digital 3 phase 4 Wire/3 Phase 3 Wire
Aux. Supply	AC 230V/110V AC 50/60Hz
Voltage Input	110/220/415/440V AC(L-L)500V maximum/288V(L-N)
Current input	5 Amp AC
Rated Frequency	50/60 Hz
Power consumption	>7 VA
Communication	RS485 (Modbus RTU Model,19200lps,9600bps)
Working Temperature	-10°C to +70°C
Humidity	< 90% RH
Program / Setting	Through 3 push buttons, it is to show on 7 displays with 4 decades each
Accuracy	0.5% 220-240V FS = 5A, PF = 1.0
Dust/Water Proof Rating	Panel : IP52, Case : IP20
Size	96 (W) x 96 (H) x 75 (L) mm

Certificate

- 1) IEC Test : IEC62053-22, Class 0.5
- 2) CE Test : EN61326 Conducted Emission
 - EN61000-3-2 Harmonic Current Emission
 - EN61000-4-2 Electrostatic Discharge
 - EN61000-4-4 Electrical Fast Transient/Burst
 - EN61000-4-6 Conducted Susceptibility
 - EN61000-4-11 Voltage Dips and Interruption
 - EN61326 Radiated Emission
 - EN61000-3-3 Voltage Fluctuation and Flicker
 - EN61000-4-3 Radiated Susceptibility
 - EN61000-4-5 Surge
 - EN61000-4-8 Power Frequency magnetic Field



MANUFACTURERS

TAIWAN METERS PLANT CO., LTD.

3F., No.66-11, Sec. 2, Nankan Rd., Lujhu Township,
Taoyuan County 338, Nankan Industrial Park, Taiwan.

TEL :886-3-3117995 (Rep.)

FAX :886-3-3114894

E-mail : taiwan.meters@msa.hinet.net

Website : [http : //www.taiwanmeters.com.tw](http://www.taiwanmeters.com.tw)