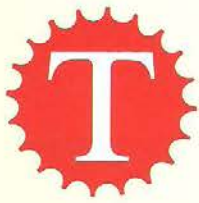




TAIWAN METERS
TAIWAN SAFETY CONTROLS

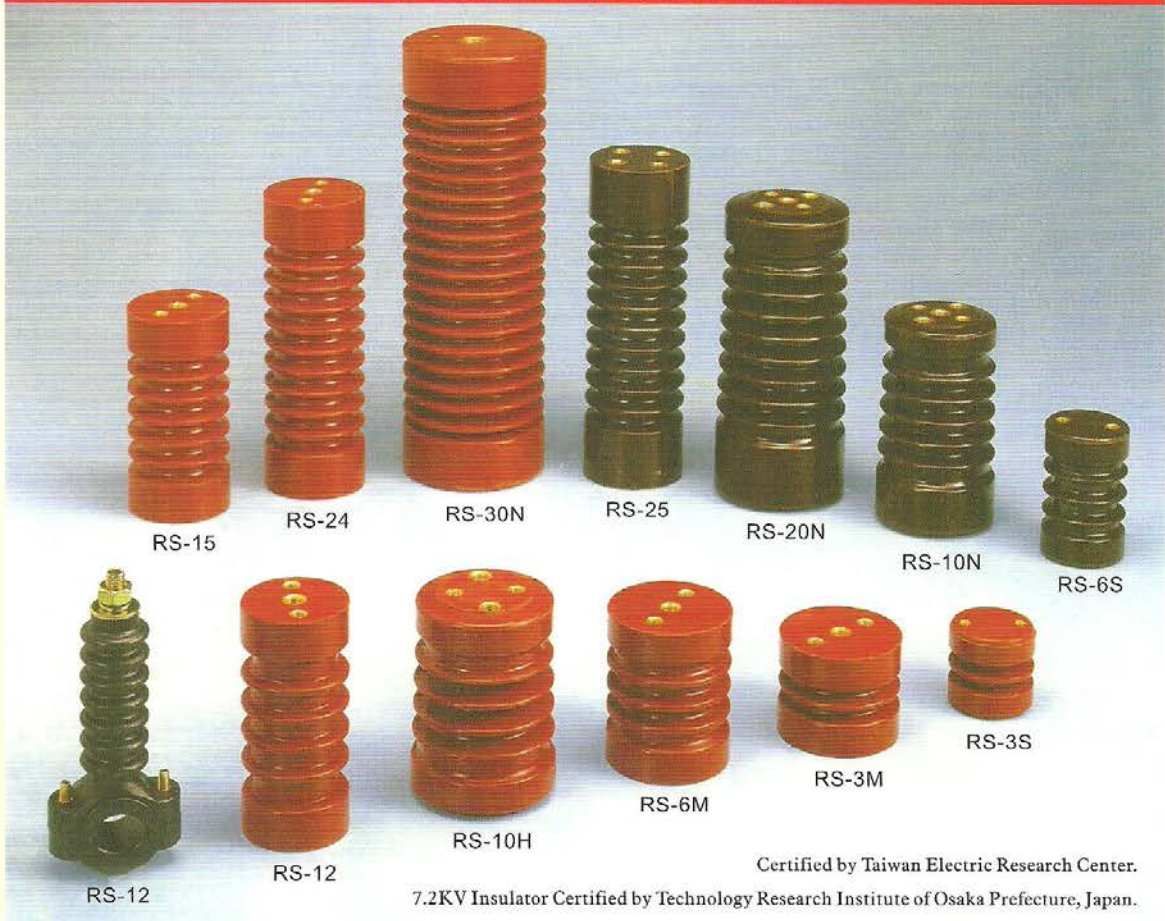
HT & LT Insulator



Insulators

from Taiwan

HIGH VOLTAGE INSULATORS

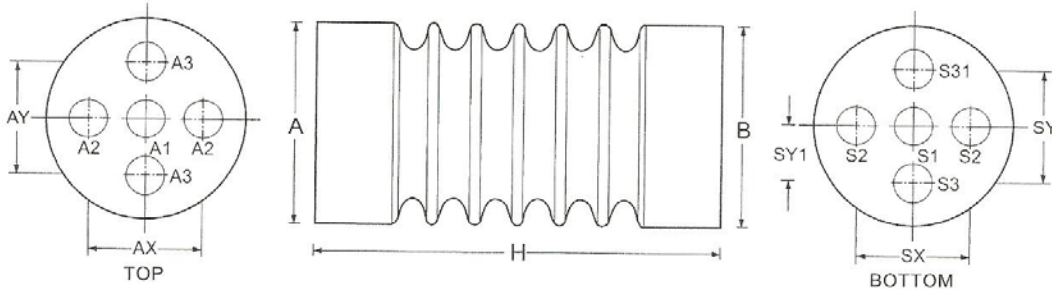


LOW VOLTAGE INSULATORS





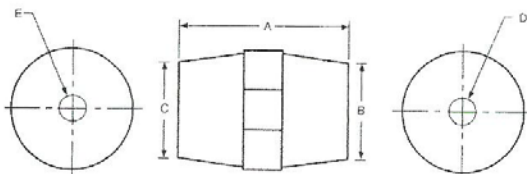
HIGH VOLTAGE INSULATORS



1. Material: Bulk molding compound, unsaturated polyester resin based or EPOXY based.
2. Nut inserts: Brass, various specifications are available.
Arrangement of nut inserts can be designed upon request.
3. Test specifications: JIS C3801 and JIS C3851.
4. Color: Dark brown or dark red.
5. Dimension and characteristics: (Shown below)

Part No.		RS-30N	RS-20N	RS-10N	RS-10H	RS-25	RS-24	RS-15	RS-12	RS-6M	RS-3M	RS-6S	RS-3S	
End diameters(A/B),mm		100	85/90	75/80	75/80	70	70	70	58	70	70	55	50	
Height/(H),mm		310	210	145	115	230	210	142	130	90	60	90	50	
Surface leakage distance,mm		630	330	240	190	375	356	210	172	125	88	130	65	
Rated voltage,kV		36	22	16.5	12	25	24	15	12	7.2	3.6	7.2	3.6	
Low frequency dielectric strength,kV		75	50	36	28	60	60	50	36	22	16	22	16	
Impulse voltage resistance,kV		200	125	95	75	150	125	110	95	75	60	60	45	
Persistent bending strength,1min,kg		500	600	600	600	300	300	400	300	400	400	250	150	
Tensile strength,kg		>3000	>2000	>2000	>2000	>2000	>1500	>1500	>2000	>1200	>1200	>1800	>1000	
Torque strength,kg-m		>25	>25	>25	>25	>25	>25	>25	>25	>25	>25	>25	>20	
INSERTS ARRANGEMENT	TOP	A1	M16	M10	M10	---	---	M10	M10	M10	M10	---	---	
		A2	M8	M8	M8	M8	M10	---	---	M8	M8	---	M6	
		A3	---	M10	M10	M10	M10	M8	M8	---	---	---	M8	---
		AX	40	24	34	34	40	---	---	36	40	40	---	32
		AY	---	40	40	40	40	40	40	---	---	---	32	---
	BOTTOM	S1	M16	---	---	---	---	M10	M10	M10	M10	M10	M10	M8
		S2	---	M10	M10	M10	---	---	---	---	---	---	---	---
		S3	M4	M10	M10	---	M10	---	---	---	---	---	---	---
		S31	---	M10	M10	---	M10	---	---	---	---	---	---	---
		SX	---	40	40	40	---	---	---	---	---	---	---	---
		SY	---	40	40	---	40	---	---	---	---	---	---	---
		SY1	30	---	---	---	---	---	---	---	---	---	---	---

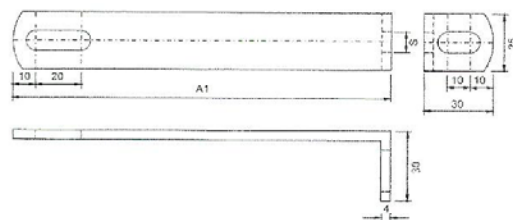
LOW VOLTAGE INSULATOR DIMENSION



unit:mm

ITEM NO.	A	B	C	D	E
RM-25/RM-25S	25	30	22.9	M6	M6
RM-35S	35	42	37	M8	M8
RM-35/RM-35A	35	32	28	M8	M8
RM-40A/RM-40AB	40	40	30	M8	M8
RM-51/RM-51A	51	36	29	M8	M8
RM-76/RM-76A	76	50	36	M10	M10

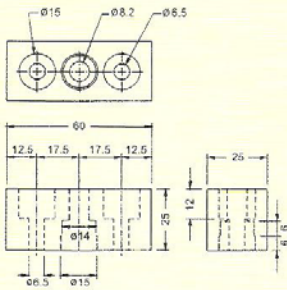
BUSBAR CLAMP DIMENSION



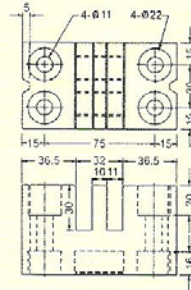
No.	Dimension	S	Busbar side A1	Busbar width	Remark
BC-1	9	75	40-60	One set contains two pieces and M8 screws.	
BC-2	9	100	60-80		
BC-3	9	120	80-105		
BC-4	9	140	105-125		
BC-5	9	165	125-150		
BC-1A	10.5	75	40-60		
BC-2A	10.5	100	60-80		
BC-3A	10.5	120	80-105		
BC-4A	10.5	140	105-125		
BC-5A	10.5	165	125-150		

BUSBAR SUPPORTS

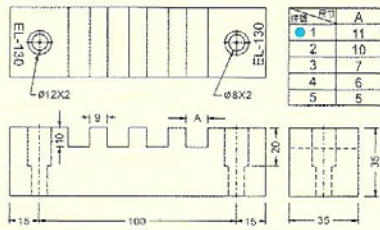
BS-60



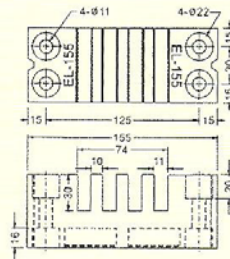
BS-105



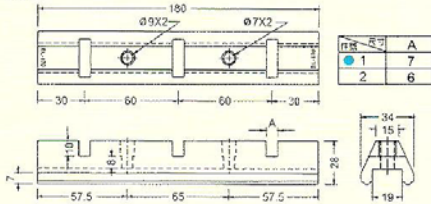
BS-130



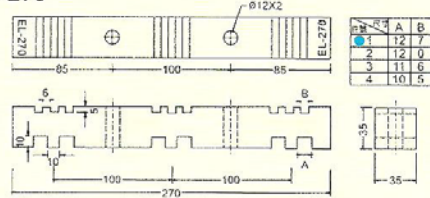
BS-155



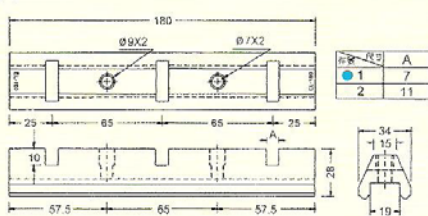
BS-170



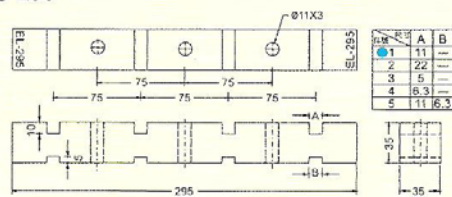
BS-270



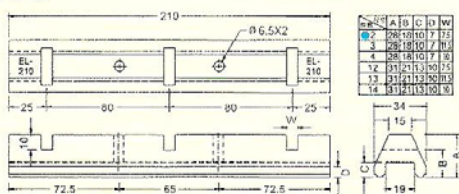
BS-180



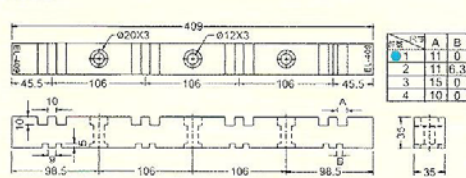
BS-295



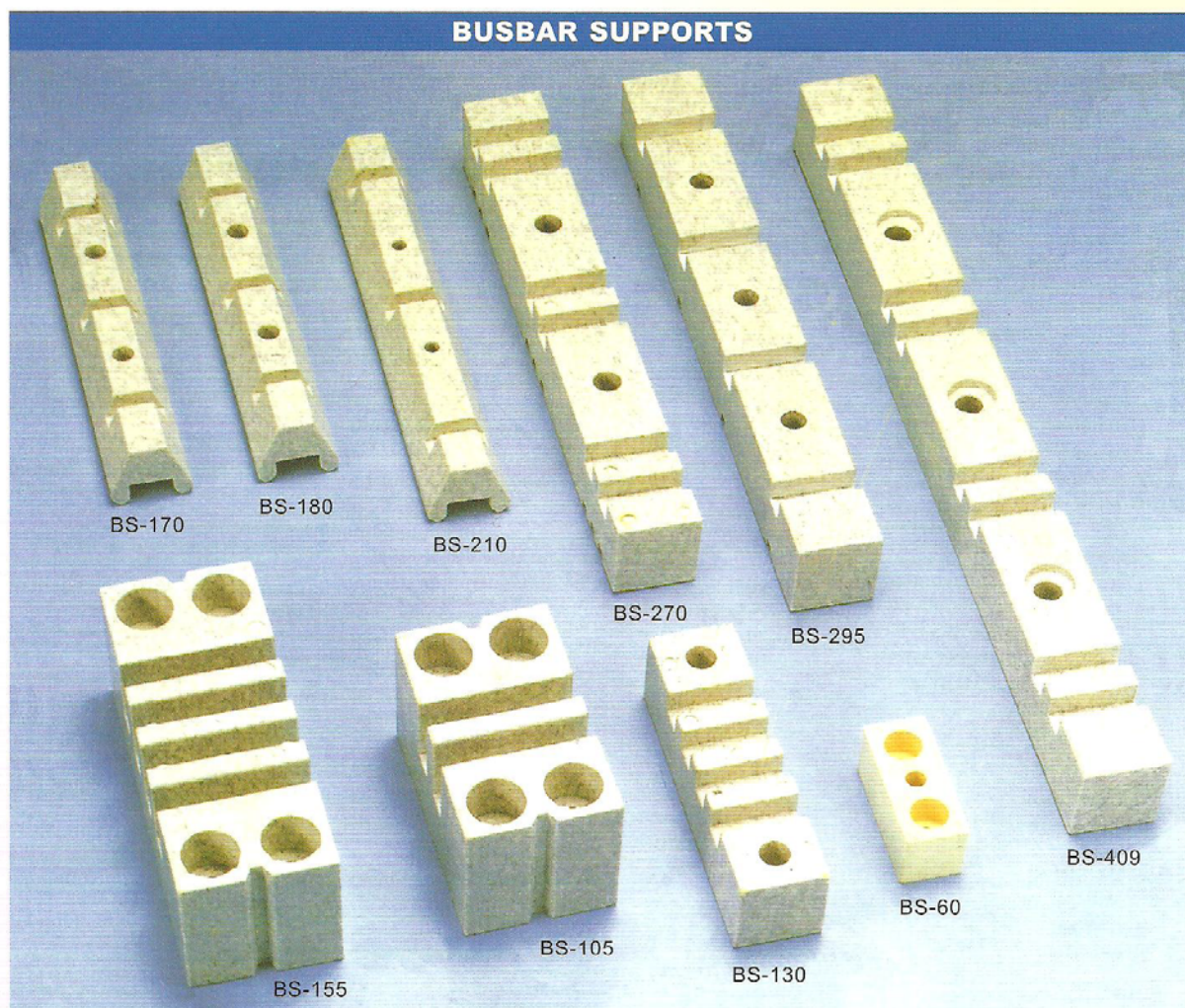
BS-210



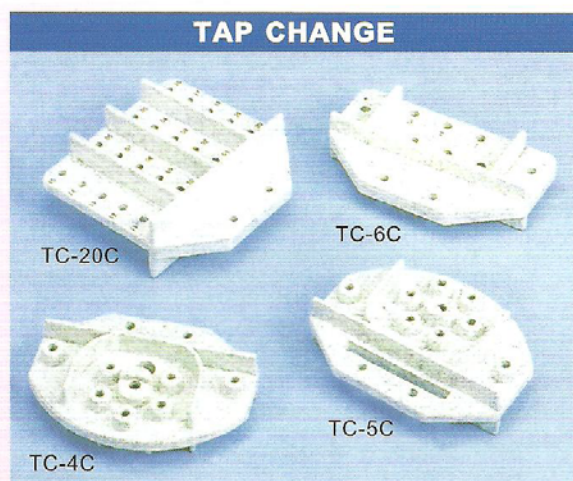
BS-409



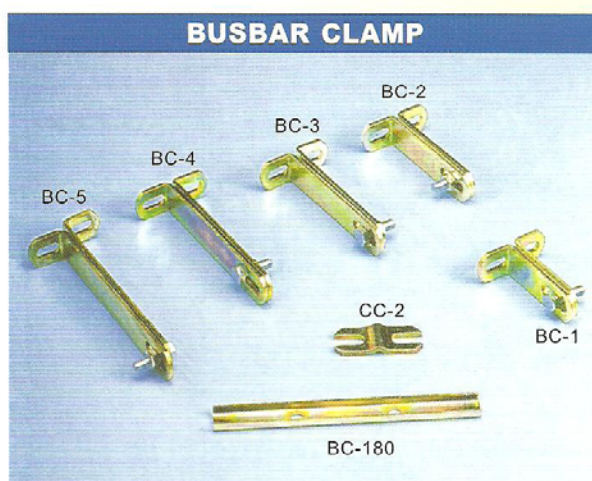
BUSBAR SUPPORTS



TAP CHANGE



BUSBAR CLAMP



MANUFACTURERS

TAIWAN METERS PLANT CO., LTD.

3F., No.66-11, Sec. 2, Nankan Rd., Lujhu Township,
 Taoyuan County 338, Nankan Industrial Park, Taiwan.

TEL : (03) 3117995 (Rep.)

FAX : (03) 3114894

E-mail : taiwanmeters@gmail.com

website : <http://www.risesun.com.tw>

