

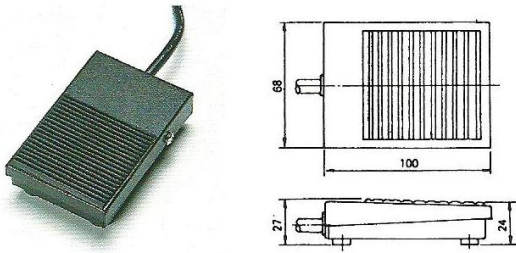


TAIWAN METERS
TAIWAN SAFETY CONTROLS

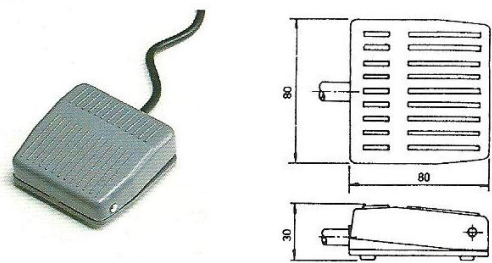
**Buzzer, Alarm,
Foot Switch,
Siren, Hoist Switch**

Type	Rating	Type switch enclosed	Contact	Cord Spec.	Enclosure material
FS-1	10A 250VAC	SPDT Micro Sw.	1A1B	PVC, 0.75mm ² , 3C	Ferrous cover
FS-2	10A 250VAC	SPDT Micro Sw.	1A1B	PVC, 0.75mm ² , 3C	Poly-carbonate
FS-3A	10A 250VAC	Micro Sw. Momentary	1A1B	PVC, 0.75mm ² , 3C	Aluminum
FS-3B	15A 250VAC	1306 Long Head Micro Sw.	1A1B	PVC, 0.75mm ² , 3C	Aluminum
FS-3C	10A 250VAC	1306 Long Head Micro Sw.	2A2B	PVC, 0.75mm ² , 3C	Aluminum
FS-4	15A 250VAC	1305 Long Head Micro Sw.	1A1B	Accessory: Cable gland (NoCable)	Aluminum
FS-5	15A 250VAC	1305 Long Head Micro Sw.	1A1B	Accessory: Cable gland (NoCable)	Aluminum
FS-4A	15A 250VAC	1305 Long Head Micro Sw.	2A2B	Accessory: Cable gland (NoCable)	Aluminum
FS-5A	15A 250VAC	1305 Long Head Micro Sw.	2A2B	Accessory: Cable gland (NoCable)	Aluminum

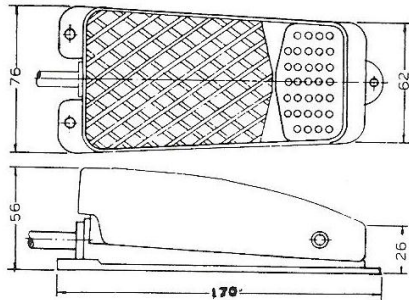
FS-1



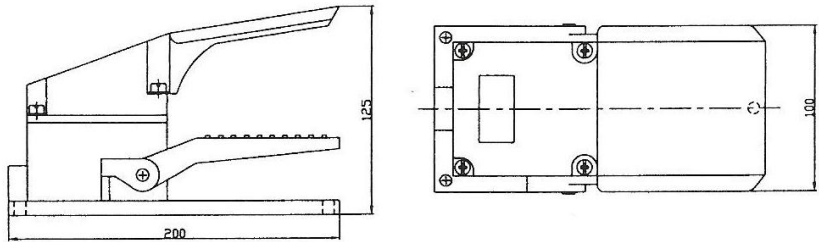
FS-2



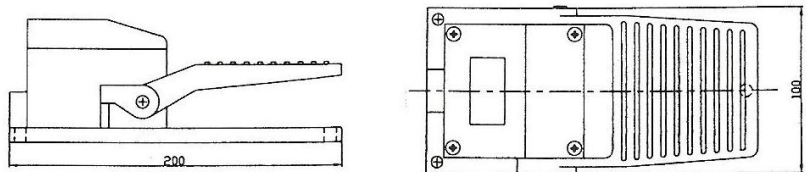
FS-3A
FS-3B
FS-3C



FS-4



FS-5





BUZZER

Type	Voltage	AC or DC
ABF: Flush mounting	12 V	DC
ABS: Surface mounting	24 V	
BF-30 : 30 φ Flush	110 V	
BF-30 : 30 φ Flush	220 V	AC
BF-30 : 30 φ Flush		
BF-30 : 30 φ Flush		

SPECIFICATION

Service life: Over than 30 minutes (Continue)

Volume: BF-30: Over than 75 dB

ABF 75 ABS 80 series: Over than 85 dB

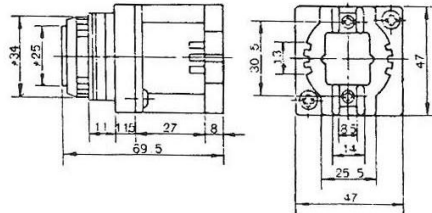
BL-100 series: Over than 95 dB

BF-30

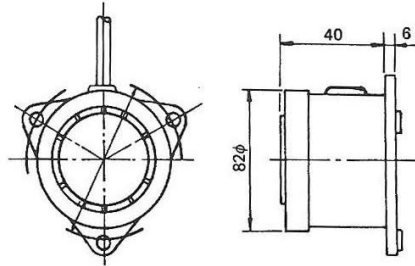


Rating: AC 110, 220V

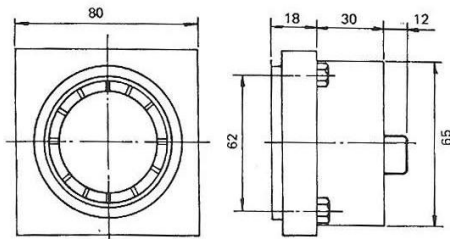
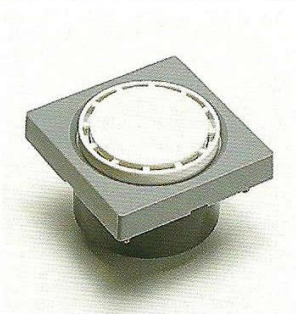
DC 12V, 24V



ABF-75



ABS-80

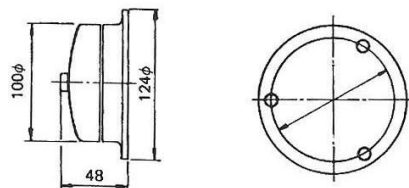


BL-100

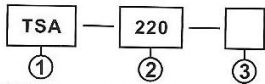


Voltage: DC 6V, 12V, 24V

AC 110V, 220V, 50/60HZ



■ **MODEL DESIGNATION**



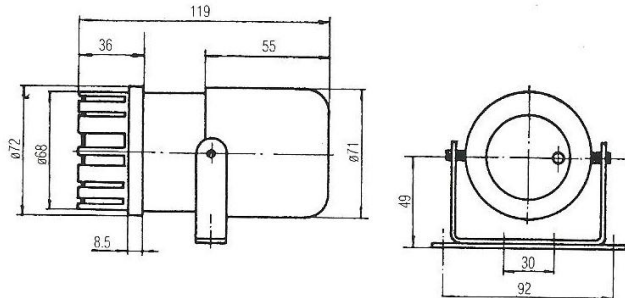
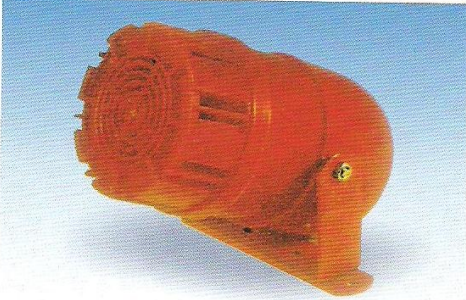
■ **CHARACTERISTICS**

Insulation resistance	100MΩ min. (at 500 VDC)	
Dielectric Strength	1500 VDC, 50/60 Hz for 1 minute	
Volume	TSA	90 D.B. min.
	TSC	100 D.B. min.
	TSD	120 D.B. min.
Service life	over than 100 hrs. (continue)	

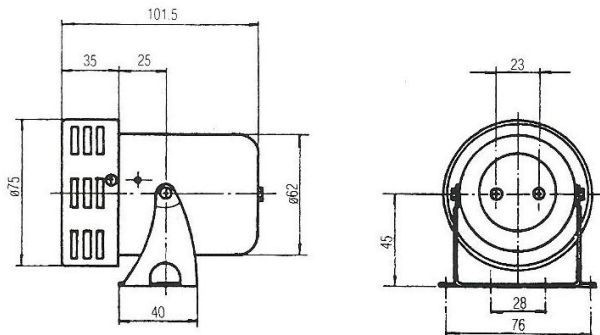
Designation	Signal	Description
1. Type	TSA	Mini Plastic Siren
	TSB	Large Siren
	TSC	Mini Ferrous-cover Siren
2. Voitage	12	12 V
	24	24 V
	110	110 V
	220	220 V
3. Current	(NONE)	AC
	D	DC

■ **DIMENSIONS**

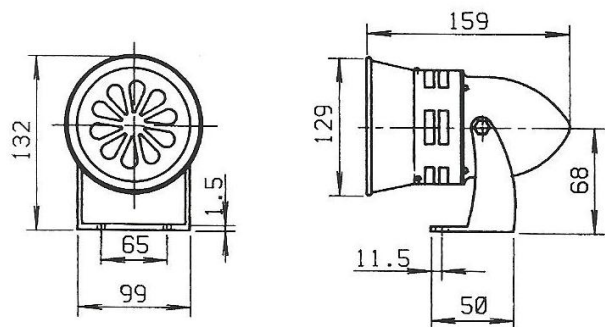
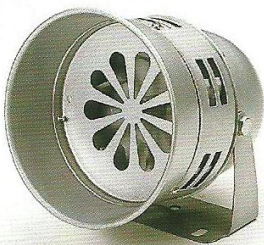
TSA-220



TSC-220



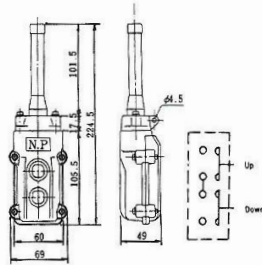
TSD-220



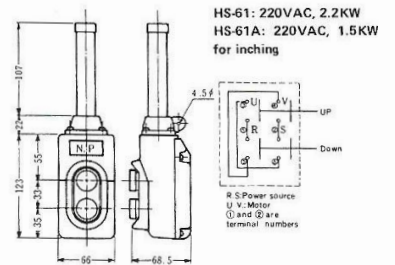
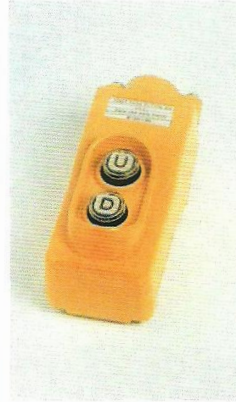


HOIST WATERPROOF PUSH BUTTON, 5A/15A 250VAC

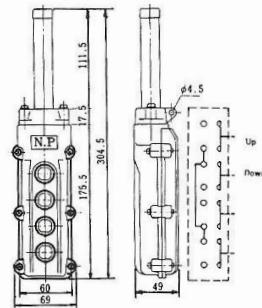
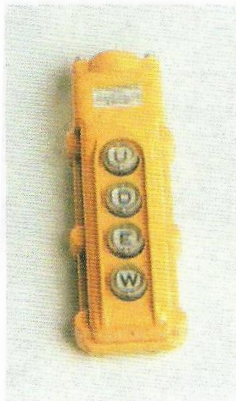
HS-81-5AMP (2P)



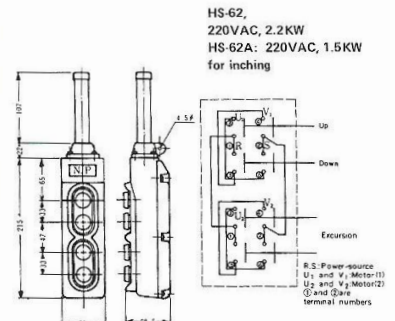
HS-61-15AMP (2P)



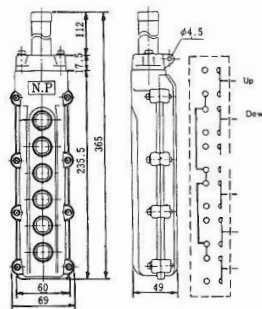
HS-82-5AMP (4P)



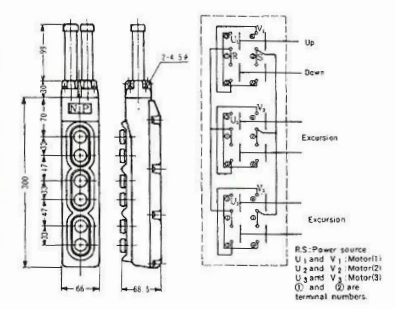
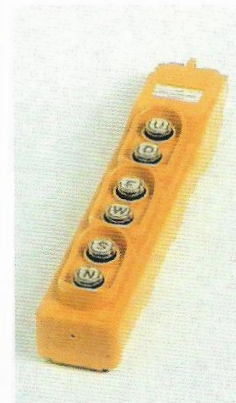
HS-62-15AMP (4P)



HS-83-5AMP (6P)



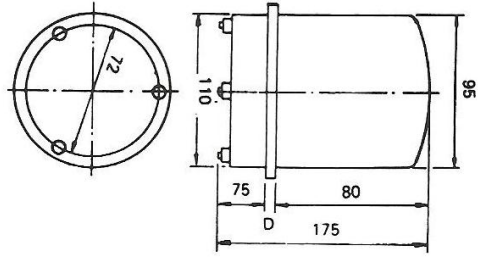
HS-63-15AMP (6P)



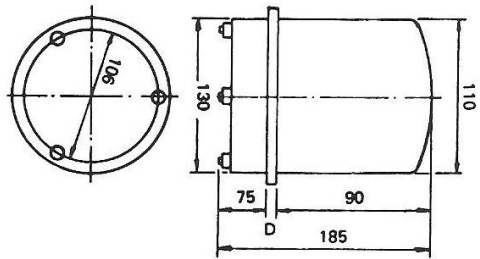


WARNING LIGHT DC6V/12V/24V AC110V/220V

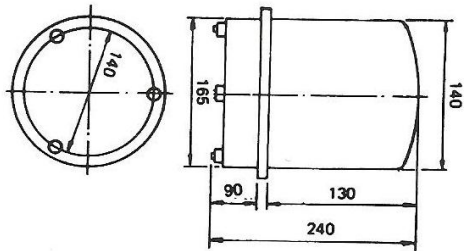
A110



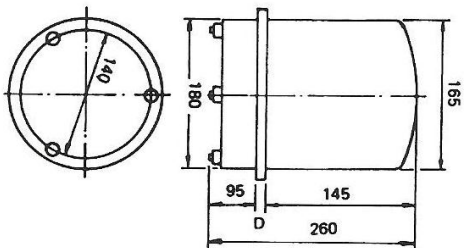
A130



A160



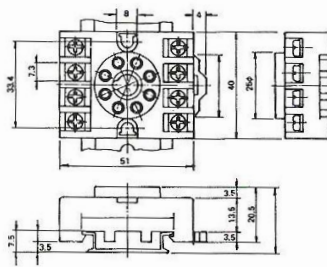
A180



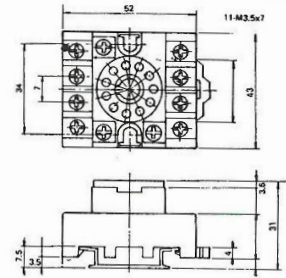
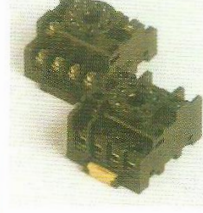


RELAY BASE SOCKET Round Pin & Square Pin

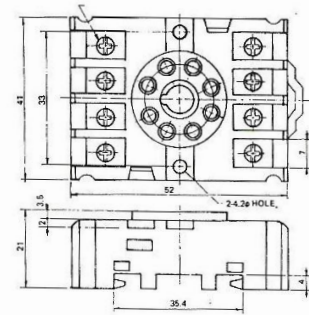
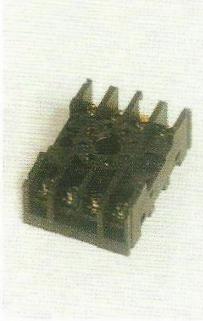
PF083N 8 Pins



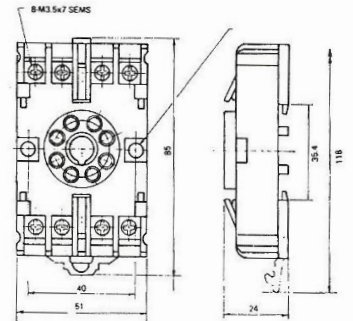
PF113N 11 Pins



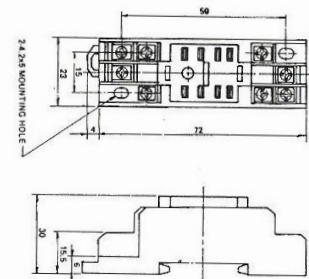
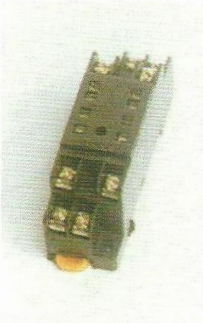
PF085A



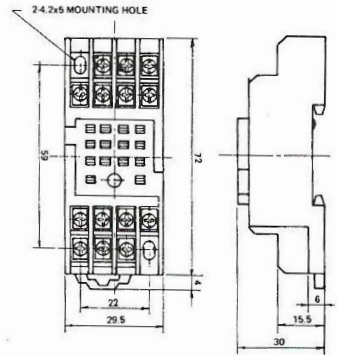
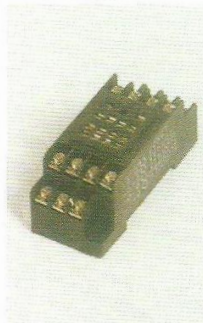
8PFA



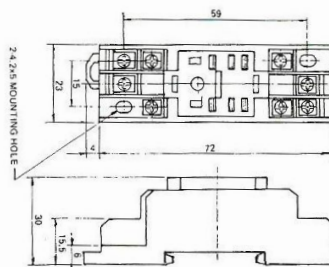
PYF08A



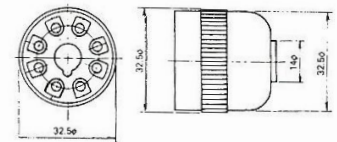
PYF14A



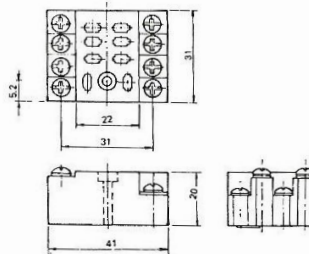
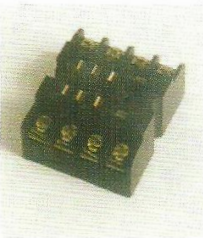
PTF08A



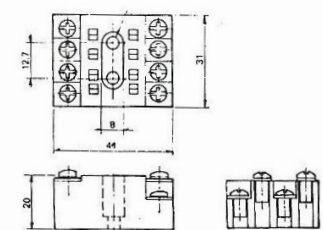
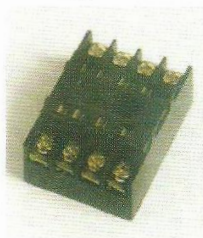
US08



PTF08



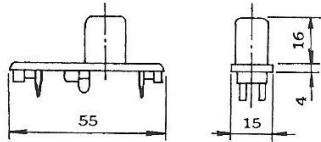
PYF08



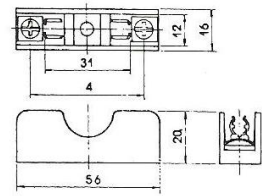


FUSE BOX

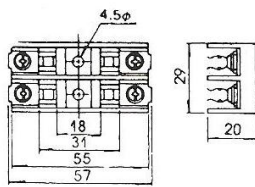
OPEN NEON PILOT LAMP
FS-10 10A 1 Pole



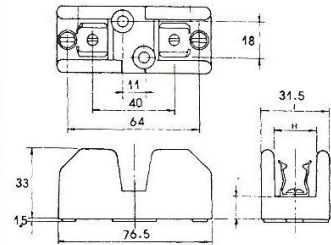
FS-101. 10A 1 Pole



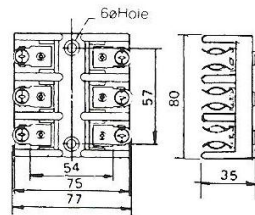
FS-102. 10A 2 Pole



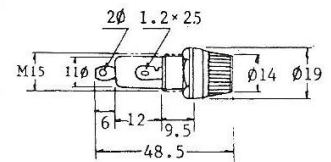
FS-301. 30A 1 Pole



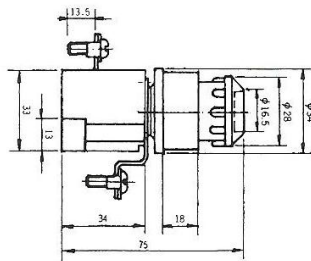
FS-303. 30A 3 Pole



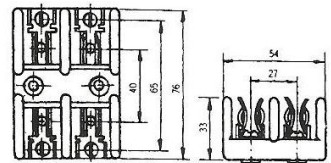
FS-630. 1A-30A



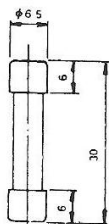
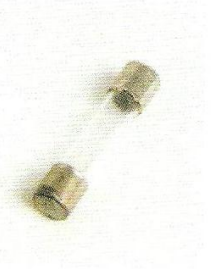
D Fuse E-16



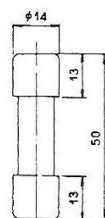
FS-302. 30A 2 Pole



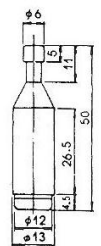
Fu-630 (1A-30A)



Fu-1450 (1A-50A)



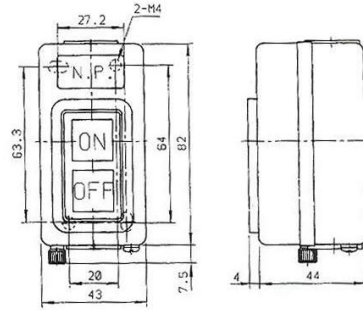
Fu-16 (2A-30A)



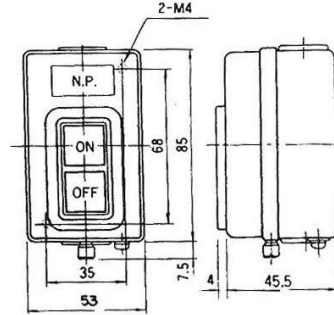


POWER PUSH BUTTON SWITCH 10A/15A/30A

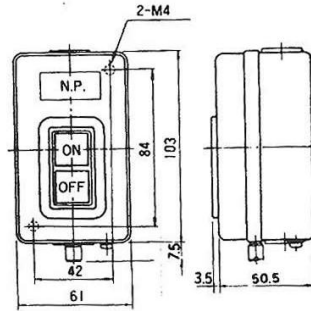
TBSN-310, 3P 10Amp (1.5KW) Flush Mounting



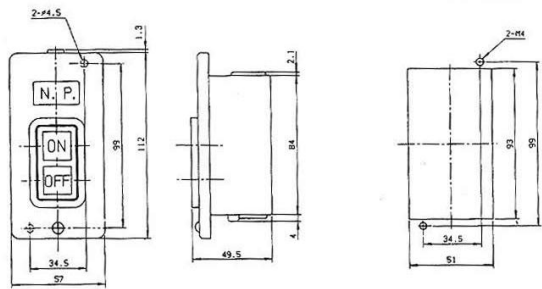
TBSN-315, 3P 15Amp (2.2KW) Flush Mounting



TBSN-330, 3P 30Amp (3.7KW) Flush Mounting



TBSY-315,330. 3P 15/30Amp Surface Mounting



TBSP-315,330. 3P 15/30Amp Flush Mounting

